

Test by: MNS Seed Testing, LLC New Richland, MN

2021 Corn Grain Top 30 Harvest Report

South Dakota Northeast [SDNE] ARLINGTON, SD

Tim Bjorklund, Brookings County, SD 57212

Early-Season Test	91 - 95 Day CRM B2021SDNE06a
Top 30 of 45	For Gross Income (Sorted by Yield) Average of (3) Replications
PREV. CROP/HERB:	Soybeans / Durango, Sonic, Sharpen, Sinister
SOIL DESCRIPTION:	Poinsett-Buse-Waubay silty clay loam, well drained, non-irrigated
SOIL CONDITION:	No-Till, very high P, medium K, 7.1 pH, 4.6% OM, 21.4 CEC
PEST MANAGEMENT:	Resicore, Force
FERTILITY - Applied N:	64 Spring
Applied N-P-K (units):	64-75-0
SEEDED - RATE - ROW:	May 10 32.0 /A 30" spacing
HARVESTED - STAND:	Oct 26 30.3 /A

TEST COMMENTS:

This site ran 5 inches or more below the 10-year average rainfall all growing season. A split application of nitrogen was planned but wasn't applied; the lack of rainfall was a factor in that decision. We had some minor wildlife damage and only a couple of plots had weed issues at harvest. The worst lodging scores were related to raccoons, otherwise, stalk health seemed good. Tim, the host at this location, has seen some of the variation in yields with the quality of soil really driving yields more than ever this year. This plot site has been in no-till for over 25 years and had nice yields this year despite the drought.

Company/Brand	Product/Brand	Technol.†	RM	Yield Bu/A ↓	Moisture %	Lodging %	Stand (x 1000)	Gross Income \$/Acre	Rank
Dairyland	DS-3550AM ↗	AM	95	246.5	16.4	1	29.0	1222	1
Heine	6450VT2PRO ↗	VT2P	95	240.7	16.3	1	31.4	1194	2
Rob-See-Co	RC4535-3110 ↗	3110	95	239.2	16.2	1	29.8	1187	3
Heine	6330DGV2PRO ↗	VT2PDG	95	234.4	16.6	1	30.0	1161	4
Heine	6200VT2PRIB ↗	VT2P	95	233.8	16.8	1	29.5	1156	5
Federal	4520 VT2PDG ↗	VT2PDG	95	232.9	16.6	1	31.4	1154	6
REA	3B912 ↗	VT2P	91	229.6	15.2	1	31.4	1146	7
REA	4B933 ↗	VT2P	93	229.6	15.9	1	29.5	1142	8
Thunder	T6294 VT2P ↗	VT2P	94	228.7	16.5	1	30.0	1133	9
Rob-See-Co	RC4427-3220 ↗	3220	94	224.4	15.9	1	29.8	1116	10
Renk	RK429-3220A ↗	3220A	93	224.3	15.9	1	30.9	1115	11
Latham	LH 4517 VT2P RIB ↗	VT2P	95	224.0	16.3	1	30.5	1111	12
REA	4B958 ↗	VT2P	95	221.6	16.5	1	29.0	1098	14
Renk	RK485DGV2P ↗	VT2PDG	94	219.8	16.3	1	30.5	1090	18
Thunder	T6993 VT2P ↗	VT2P	93	219.7	15.6	1	31.9	1095	15
Rob-See-Co	RC4166-3110A ↗	3110A	91	219.6	15.8	2	30.5	1093	16
Federal	4580 VT2PRIB ↗	VT2P	95	219.5	16.6	1	31.4	1087	20
Heine	6230VT2PRIB ↗	VT2P	95	219.1	16.5	1	31.0	1086	21
Hefty	H4132 ↗	VT2P	91	219.0	15.4	1	31.0	1092	17
Latham	LH 4375 VT2P RIB ↗	VT2P	93	218.3	15.4	1	30.5	1089	19
Thunder	T6595 VT2P ↗	VT2P	95	218.1	16.5	1	29.5	1081	22
REA	4B944 ↗	VT2P	94	216.7	16.1	1	30.9	1076	23
Latham	LH 4242 VT2P RIB ↗	VT2P	92	215.6	16.3	1	29.5	1069	25
Integra	4311 VT2PRIB ↗	VT2P	93	215.0	15.6	1	30.0	1071	24
Integra	4509 VT2PRIB ↗	VT2P	95	213.8	16.5	1	28.6	1059	27
Thunder	T6992 VT2P ↗	VT2P	92	212.9	15.4	1	30.5	1062	26
Heine	6215VT2PRO ↗	VT2P	95	212.0	16.2	1	30.5	1052	28
NK Brand	NK9175-5222A EZR ↗	5222A	91	210.9	16.2	1	30.9	1047	29
Integra	4041 VT2PRIB ↗	VT2P	90	208.9	15.5	1	31.0	1041	30
Hefty	H4032 ↗	VT2P	90	208.6	15.4	1	31.0	1040	31
DeKalb	DKC47-54RIB CK	STX	97	222.8	17.5	1	29.8	1098	13
				Averages =	213.2	16.0	1	30.3	1061
				LSD (0.10) =	20.4	0.5	ns		
				LSD (0.25) =	10.7	0.3	ns		
				C.V. =	9.1				
mark.tollefson@firstseedtests.com, (507) 456-2357				Historic yield: 178.29 bu/a, 9 yr(s)					



Mark Tollefson

mark.tollefson@firstseedtests.com, (507) 456-2357

Yield & Income Factors: Base Moisture = 15.0% Shrink = 1.2 Drying = \$0.03 Prices: GMO = \$5.00

Report Date: 10/27/2021

† See last page for abbreviation descriptions. Dark colored row identifies the check product found in early- and full-season tests. **Bold** yields are significantly above test average by LSD(0.10). **Italicized** brands exceed the grain moisture limit for this test. **ns** = column values not significantly different. ↗ New! Links to full product yield results at www.firstseedtests.com

©2021, All rights reserved by Elite Field Genetics, LLC

Additional reports available at www.firstseedtests.com

Test by: MNS Seed Testing, LLC New Richland, MN

2021 Corn Grain Top 30 Harvest Report

South Dakota Northeast [SDNE] ARLINGTON, SD
Tim Bjorklund, Brookings County, SD 57212

Full-Season Test	96 - 100 Day CRM B2021SDNE06b
Top 30 of 63	For Gross Income (Sorted by Yield) Average of (3) Replications
PREV. CROP/HERB:	Soybeans / Durango, Sonic, Sharpen, Sinister
SOIL DESCRIPTION:	Poinsett-Buse-Waubay silty clay loam, well drained, non-irrigated
SOIL CONDITION:	No-Till, very high P, medium K, 7.1 pH, 4.6% OM, 21.4 CEC
PEST MANAGEMENT:	Resicore, Force
FERTILITY - Applied N:	64 Spring
Applied N-P-K (units):	64-75-0
SEEDED - RATE - ROW:	May 10 32.0 /A 30" spacing
HARVESTED - STAND:	Oct 26 27.7 /A

TEST COMMENTS:

This site ran 5 inches or more below the 10-year average rainfall all growing season. A split application of nitrogen was planned but wasn't applied; the lack of rainfall was a factor in that decision. We had some minor wildlife damage and only a couple of plots had weed issues at harvest. The worst lodging scores were related to raccoons, otherwise, stalk health seemed good. Tim, the host at this location, has seen some of the variation in yields with the quality of soil really driving yields more than ever this year. This plot site has been in no-till for over 25 years and had nice yields this year despite the drought.

Company/Brand	Product/Brand	Technol.†	RM	Yield Bu/A ↓	Moisture %	Lodging %	Stand (x 1000)	Gross Income \$/Acre	Rank
Dairyland	DS-4000AMXT ↗	AMXT	100	252.4	18.2	1	28.0	1238	1
Heine	6650TRE ↗	TRE	99	242.9	19.3	1	28.3	1183	4
Thunder	T6999 VT2P ↗	VT2P	99	241.9	17.5	1	28.1	1191	2
REA	5B994 ↗	VT2P	99	241.0	17.5	1	27.1	1187	3
Enestvedt	E699DP RIB ↗	VT2P	99	238.0	17.6	1	28.0	1171	6
REA	4B976 ↗	VT2P	97	237.7	17.3	1	28.1	1172	5
Heine	6500VT2PRO ↗	VT2P	98	237.2	17.4	1	29.0	1169	7
Latham	LH 4657 VT2P RIB ↗	VT2P	96	237.0	18.2	1	27.6	1162	8
Pioneer	P0075Q GC ↗	QR	100	236.7	18.8	1	27.6	1156	10
Renk	RK561DGVT2PRIB ↗	VT2PDG	95	236.3	17.7	1	28.1	1162	9
Federal	5000 VT2PRIB ↗	VT2P	100	235.9	18.8	1	29.5	1153	11
Thunder	T6996 VT2P ↗	VT2P	96	234.5	18.1	1	26.6	1151	12
Channel	199-29 STXRIB GC ↗	STX	99	233.7	18.0	1	28.5	1148	14
REA	4B965 ↗	VT2P	97	233.5	17.7	1	28.5	1149	13
Golden Harvest	G99E68-5122 EZR ↗	5122	99	233.3	17.7	1	29.5	1148	15
Dairyland	DS-3959Q ↗	QR	99	231.0	19.7	1	29.0	1122	19
Renk	RK590VT2P ↗	VT2P	98	230.6	18.3	1	27.1	1130	16
Heine	7010VT2PRO ↗	VT2P	100	230.3	18.1	1	27.6	1130	17
Thunder	T6100 VT2P ↗	VT2P	100	229.5	18.1	1	28.1	1126	18
Enestvedt	E658DP RIB ↗	VT2P	96	228.4	18.4	1	27.1	1118	22
DeKalb	DKC48-95RIB GC ↗	VT2P	98	228.1	17.8	1	28.1	1121	20
Federal	4990 VT2PRIB ↗	VT2P	99	228.1	18.1	1	28.5	1119	21
Dairyland	DS-3727AM ↗	AM	97	226.4	17.9	1	28.5	1113	24
Heine	6600VT2PRO ↗	VT2P	99	226.0	18.0	1	29.0	1109	25
Hefty	H4653 RIB ↗	VT2PDG	96	225.8	17.3	1	29.0	1114	23
Latham	LH 4937 VT2P RIB ↗	VT2P	99	223.0	17.4	1	26.1	1099	27
Hefty	H4942 RIB ↗	VT2P	99	223.0	17.7	2	28.5	1097	28
Hefty	H4842 RIB ↗	VT2P	98	223.0	18.2	1	29.5	1094	29
REA	5B984 ↗	VT2P	98	222.9	17.2	1	25.6	1100	26
Integra	5052 VT2PRIB ↗	VT2P	100	222.5	18.8	1	27.6	1087	30
DeKalb	DKC47-54RIB CK	STX	97	221.8	18.4	1	26.6	1086	31

Averages = **221.5** **18.2** **1** **27.7** **1087**

LSD (0.10) = 15.9 0.7 ns

LSD (0.25) = 8.3 0.4 ns

C.V. = 6.8

Historic yield: 178.29 bu/a, 9 yr(s)

Mark Tollefson

mark.tollefson@firstseedtests.com, (507) 456-2357

Yield & Income Factors: Base Moisture = 15.0% Shrink = 1.2 Drying = \$0.03 Prices: GMO = \$5.00

Report Date: 10/27/2021

† See last page for abbreviation descriptions. Dark colored row identifies the check product found in early- and full-season tests. **Bold** yields are significantly above test average by LSD(0.10). **Italicized** brands exceed the grain moisture limit for this test. **ns** = column values not significantly different. ↗ New! Links to full product yield results at www.firstseedtests.com

©2021, All rights reserved by Elite Field Genetics, LLC

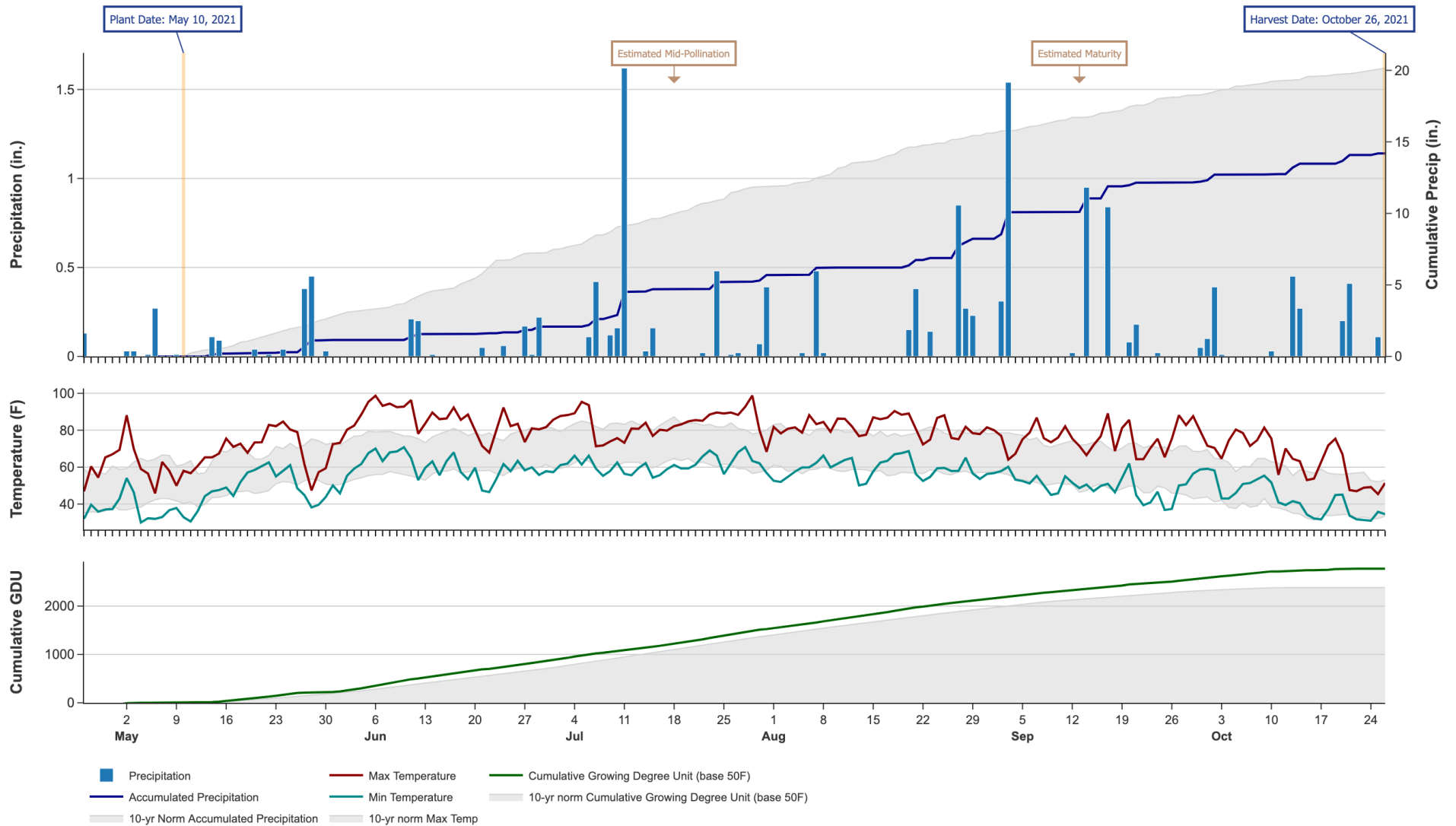
Additional reports available at www.firstseedtests.com

2021 Corn - South Dakota Northeast [SDNE]

Weather Conditions Summary at ARLINGTON, SD

Weather Data Retrieved: 10/27/2021

Monthly Total	Apr*	May	Jun	Jul	Aug	Sep	Oct*	Total
Precip (in) Normal (Diff)	0.1 0.5 (-0.4)	1.5 3.9 (-2.4)	0.9 4.4 (-3.5)	3.6 4.6 (-1.0)	2.5 3.8 (-1.2)	4.0 2.7 (+1.3)	2.0 1.9 (+0.1)	14.7 21.8 (-7.1)
GDU Normal (Diff)	21 0 (+21)	264 247 (+16)	635 516 (+118)	664 675 (-11)	632 576 (+55)	423 359 (+63)	192 63 (+128)	2831 2439 (+391)



* First monthly total starts on the date 14 days prior to planting and final monthly total ends on the harvest date.

Note: Weather information from PRISM Climate Group. Data may be revised by the provider after retrieval. FIRST will not revise or update reports to reflect any weather data changes. For information purposes only.

2021 Corn - South Dakota Northeast [SDNE]

Early-Season Test Products (45 Total)

Company/Brand	Product/Brand	Technology	RIB	RM	Seed Treat.
Dairyland	DS-3162Q	QR	Y	91	Lum,P1V
Dairyland	DS-3193AM	AM	Y	91	Lum,P1V
Dairyland	DS-3366AM	AM	Y	93	Lum,P1V
Dairyland	DS-3550AM	AM	Y	95	Lum,P1V
DeKalb	DKC47-54RIB CK	STX	Y	97	AC,P5V,EDC-EL
Federal	4185 VT2PRIB	VT2P	Y	91	AC,P2,MAG
Federal	4220 VT2PRIB	VT2P	Y	92	AC,P2,MAG
Federal	4300 VT2PRIB	VT2P	Y	93	AC,P2,MAG
Federal	4520 VT2PDG	VT2PDG	N	95	AC,P5V,MAG
Federal	4580 VT2PRIB	VT2P	Y	95	AC,P2,MAG
Golden Harvest	G91V51-5222A EZR	5222A	Y	91	AVC,C2,Vi
Hefty	H4032	VT2P	N	90	HC
Hefty	H4132	VT2P	N	91	HC
Hefty	H4322 RIB	VT2P	Y	93	HC
Hefty	H4332 RIB	VT2P	Y	93	HC
Heine	6200VT2PRIB	VT2P	Y	95	AC250
Heine	6215VT2PRO	VT2P	N	95	AC,P5
Heine	6230VT2PRIB	VT2P	Y	95	AC250
Heine	6330DGVT2PRO	VT2PDG	N	95	AC,P5V,EDC-B
Heine	6450VT2PRO	VT2P	N	95	AC,P5
Integra	4041 VT2PRIB	VT2P	Y	90	AC,P5,SU
Integra	4119 VT2PRIB	VT2P	Y	91	AC,P2,SU
Integra	4311 VT2PRIB	VT2P	Y	93	AC,P5V,SU
Integra	4509 VT2PRIB	VT2P	Y	95	AC,P2,SU
Latham	LH 4242 VT2P RIB	VT2P	Y	92	AC,P2
Latham	LH 4375 VT2P RIB	VT2P	Y	93	AC,P2
Latham	LH 4454 VT2P RIB	VT2P	Y	94	AC,P2
Latham	LH 4517 VT2P RIB	VT2P	Y	95	AC,P2
NK Brand	NK9175-5222A EZR	5222A	Y	91	CM,C2,Vi
Proseed	1794 VT2PRIB	VT2P	Y	94	AVC,C2,Vi
REA	3B912	VT2P	Y	91	AC,P5,B360
REA	4B933	VT2P	Y	93	AC,P5,B360
REA	4B944	VT2P	Y	94	AC,P5,B360
REA	4B958	VT2P	Y	95	AC,P5,B360
Renk	RK429-3220A	3220A	N	93	CM,C2
Renk	RK485DGVT2P	VT2PDG	N	94	AC,P5V
Rob-See-Co	RC4166-3110A	3110A	N	91	AVC,C2,Vi
Rob-See-Co	RC4427-3220	3220	Y	94	CM,C2,Vi
Rob-See-Co	RC4535-3110	3110	N	95	CM,C2,Vi
Thunder	T6294 VT2P	VT2P	Y	94	AC,P5,B360
Thunder	T6595 VT2P	VT2P	Y	95	AC,P2
Thunder	T6791 VT2P	VT2P	Y	91	AC,P2

Company/Brand	Brand/Product	Technology	RIB	RM	Seed Treat.
Thunder	T6992 VT2P	VT2P	Y	92	AC,P2
Thunder	T6993 VT2P	VT2P	Y	93	AC,P2
Titan Pro	82-95 2P	VT2P	Y	95	AC,P2

* FIRST does not inspect products for refuge blend. N* indicates the product was entered without a refuge component by the sponsoring seed company. Prior year entries may contain refuge blend.

2021 Corn - South Dakota Northeast [SDNE]

Full-Season Test Products (63 Total)

Company/Brand	Product/Brand	Technology	RIB	RM	Seed Treat.
Channel	199-29 STXRIB GC	STX	Y	99	AC,P5
Dairyland	DS-3715AM	AM	Y	97	Lum,P1V
Dairyland	DS-3727AM	AM	Y	97	Lum,P1V
Dairyland	DS-3959Q	QR	Y	99	Lum,P1V
Dairyland	DS-4000AMXT	AMXT	Y*	100	Lum,P1V
Dairyland	DS-4014Q	QR	Y	100	Lum,P1V
DeKalb	DKC47-54RIB CK	STX	Y	97	AC,P5V,EDC-EL
DeKalb	DKC48-95RIB GC	VT2P	Y	98	AC,P5V,EDC-EL
Dyna-Gro	D38VC80	VT2P	N	98	AC,P5V
Dyna-Gro	D40VC41	VT2P	N	100	AC,P5V
Enestvedt	E600DP RIB	VT2P	Y	99	AC250
Enestvedt	E658DP RIB	VT2P	Y	96	AC250
Enestvedt	E699DP RIB	VT2P	Y	99	AC250
Federal	4820 VT2P	VT2P	N	98	AC,P5V,MAG
Federal	4880 VT2PRIB	VT2P	Y	98	AC,P2,MAG
Federal	4990 VT2PRIB	VT2P	Y	99	AC,P2,MAG
Federal	4999 VT2PRIB	VT2P	Y	99	AC,P2,MAG
Federal	5000 VT2PRIB	VT2P	Y	100	AC,P2,MAG
Golden Harvest	G00H12-5122 EZR	5122	Y	100	AVC,C2,Vi
Golden Harvest	G96R61-5222 EZR	5222	Y	96	AVC,C2,Vi
Golden Harvest	G98M44-5122 EZR	5122	Y	98	AVC,C2,Vi
Golden Harvest	G99E68-5122 EZR	5122	Y	99	AVC,C2,Vi
Hefty	H4653 RIB	VT2PDG	Y	96	HC
Hefty	H4842 RIB	VT2P	Y	98	HC
Hefty	H4933 RIB	VT2PDG	Y	99	HC
Hefty	H4942 RIB	VT2P	Y	99	HC
Hefty	H5055	TRE	N	100	HC
Heine	6500VT2PRO	VT2P	N	98	AC250
Heine	6575VT2PRO	VT2P	N	99	AC,P5V,EDC-B
Heine	6600VT2PRO	VT2P	N	99	AC,P5
Heine	6650TRE	TRE	N	99	AC,P5
Heine	7010VT2PRO	VT2P	N	100	CM,C2
Innotech	IC4660-5222	5222	Y	96	AVC,C2,Vi
Innotech	IC4881-5122-EZ	5122	Y	98	AVC,C2,Vi
Integra	4702 VT2PRIB	VT2P	Y	97	AC,P5V,EDC-B
Integra	5052 VT2PRIB	VT2P	Y	100	AC,P5V,EDC-B
Latham	LH 4657 VT2P RIB	VT2P	Y	96	AC,P2
Latham	LH 4937 VT2P RIB	VT2P	Y	99	AC,P2
Latham	LH 4957 VT2P RIB	VT2P	Y	99	AC,P5V,EDC-B
Latham	LH 5025 VT2PDG RIB	VT2PDG	Y	100	AC,P2
Latham	LH 5047 VT2P RIB	VT2P	Y	100	AC,P2
NK Brand	NK9653-5222 EZR	5222	Y	96	AVC,C2,Vi

Company/Brand	Brand/Product	Technology	RIB	RM	Seed Treat.
NK Brand	NK9930-5122 EZR	5122	Y	99	AVC,C2,Vi
NK Brand	NK9991-5122 EZR	5122	Y	99	AVC,C2,Vi
Pioneer	P0075Q GC	QR	Y	100	Lum
Proseed	1996 VT2PRIB	VT2P	Y	96	AVC,C2,Vi
REA	4B965	VT2P	Y	97	AC,P2,B360
REA	4B976	VT2P	Y	97	AC,P5,B360
REA	5B984	VT2P	Y	98	AC,P5,B360
REA	5B994	VT2P	Y	99	AC,P5,B360
Renk	RK561DGVT2PRIB	VT2PDG	Y	95	AC,P2
Renk	RK579DGVT2P	VT2PDG	Y	99	AC,P2
Renk	RK590VT2P	VT2P	N	98	AC,P5V
Renk	RK593VT2PRIB	VT2P	Y	97	AC,P2
Renk	RK600VT2P	VT2P	N	100	AC,P2
Thunder	T6100 VT2P	VT2P	Y	100	AC,P2
Thunder	T6298 VT2P	VT2P	Y	98	AC,P5,B360
Thunder	T6996 VT2P	VT2P	Y	96	AC,P2
Thunder	T6999 VT2P	VT2P	Y	99	AC,P2
Thunder	T8100 SS	STX	Y	100	AC,P5
Titan Pro	11-98 2P	VT2P	Y	98	AC,P5
Titan Pro	16-00 5222	5222	Y	100	AVC,C2,Vi
Titan Pro	22-00 2P	VT2P	Y	100	AC,P2

* FIRST does not inspect products for refuge blend. N* indicates the product was entered without a refuge component by the sponsoring seed company. Prior year entries may contain refuge blend.

Footnotes and Abbreviations Descriptions

Brand Footnotes

[^] Innotech™ brand seed is distributed by Rob-See-Co, LLC. Power Plus® brand seed is distributed by Burrus. Innotech™ is a trademark of Syngenta. Power Plus® is a registered trademark of Corteva Agriscience.

CK Identifies a check product included in early- and full-season tests.

GC Grower Comparison product included by FIRST when space permits.

Corn Technologies

3110	Agrisure® Viptera® 3110 (Vip, CB,LL,GT)
3110A	Agrisure® Artesian® Viptera® 3110 (Vip, CB,LL,GT)
3220	Agrisure® Viptera® 3220 (Vip,CB,HX,LL,GT)
3220A	Agrisure® Artesian® Viptera® 3220 (Vip,CB,HX,LL,GT)
5122	Agrisure® Duracade™ 5122
5222	Agrisure® Duracade™ 5222
5222A	Agrisure® Duracade™ Artesian® 5222
AM	Optimum® AcreMax®
AMXT	Optimum® AcreMax® Xtreme
QR	Qrome™
STX	SmartStax®
TRE	Genuity® Trecepta™
VT2P	Genuity® VT Double PRO®
VT2PDG	Genuity® VT Double PRO® DroughtGard®

NOTE: The refuge component genetics may vary in a refuge blend seed product.

Corn Seed Treatments*

NA	Not Available
AC250	Acceleron® 250
AC,P2	Acceleron® 250
AC,P2,B360	Acceleron® 250 with BioRise™ B-360 ST
AC,P2,MAG	Acceleron® 250, Federal ArmourGuard
AC,P2,SU	Acceleron® 250, StepUp
AC,P5	Acceleron® 500
AC,P5,B360	Acceleron® 500 with BioRise™ B-360 ST
AC,P5,SU	Acceleron® 500, StepUp
AC,P5V	Acceleron® Poncho 500/Votivo
AC,P5V,EDC-B	Acceleron® BASIC Poncho 500/Votivo with Enhanced Disease Control
AC,P5V,EDC-EL	Acceleron® ELITE Poncho 500/Votivo with Enhanced Disease Control
AC,P5V,MAG	Acceleron® Poncho 500/Votivo, Federal ArmourGuard
AC,P5V,SU	Acceleron® Poncho 500/Votivo, StepUp
AVC,C2,Vi	Avicta® Complete 250, Vibrance®
CM,C2	CruiserMaxx® 250
CM,C2,Vi	CruiserMaxx® 250 with Vibrance
HC	Hefty Complete
Lum	LumiGEN™ (Corteva Agriscience)
Lum,P1V	LumiGEN™ Poncho 1250/Votivo

* Seed treatments may include unspecified plant health promoting components.